

Locking Medicine Cabinet

User Manual

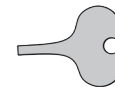
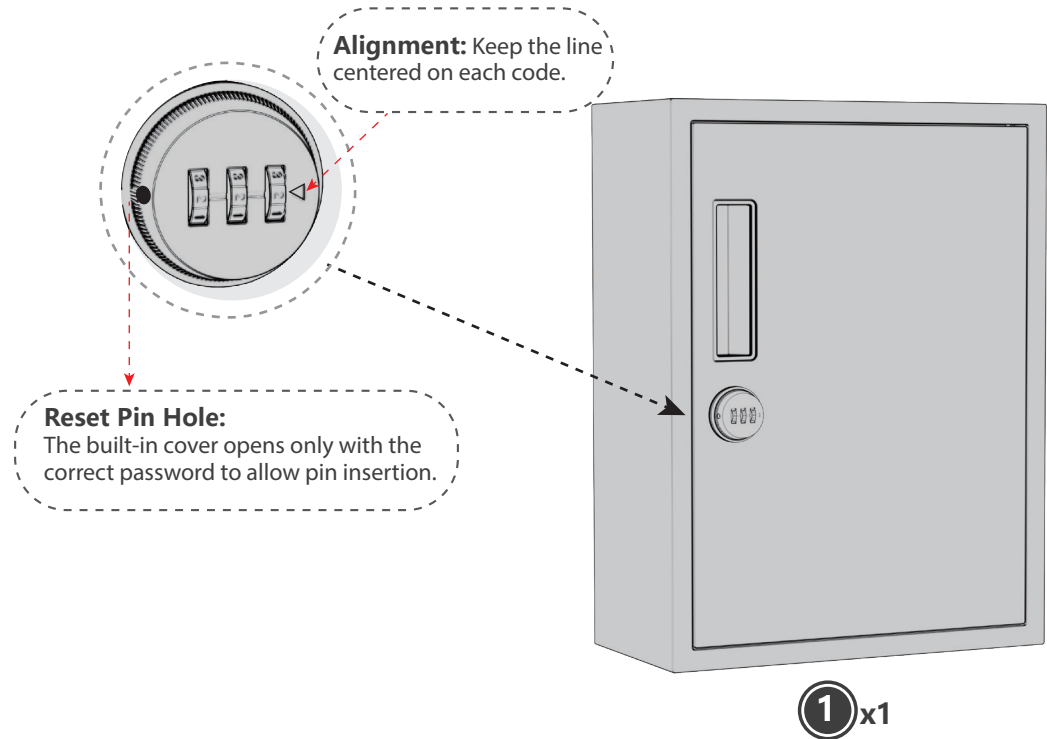


Customer Care: If any parts are missing or defective, please contact our Amazon customer support team immediately for assistance.

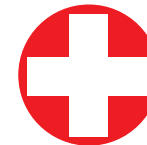
WARNINGS & CAUTIONS

- Sharp Edges: Be mindful of sharp edges during assembly and installation to prevent injury.
- Small Parts: Keep small parts and hardware away from children to avoid ingestion or misuse.

PARTS LIST



2 x1



3 x1



4 x4

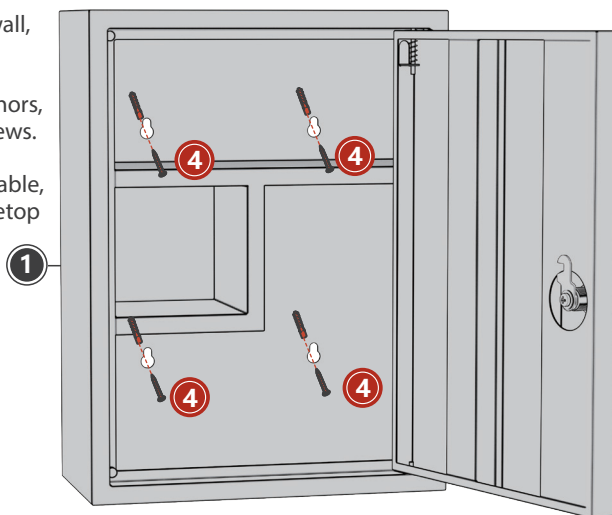
Reset Pin: Only for password resets. If lost, a hard, pointed object may be used as a substitute.

INSTALLATION INSTRUCTIONS

Installation Steps:

1. Position cabinet against wall, mark 4 screw holes.
2. Drill holes, insert wall anchors, and mount cabinet with screws.

OR place the cabinet on a stable, tip-resistant surface for tabletop use.



COMBINATION LOCK OPERATION GUIDE:

STEP 1

Lock & Unlock Instructions

1. Initial Password

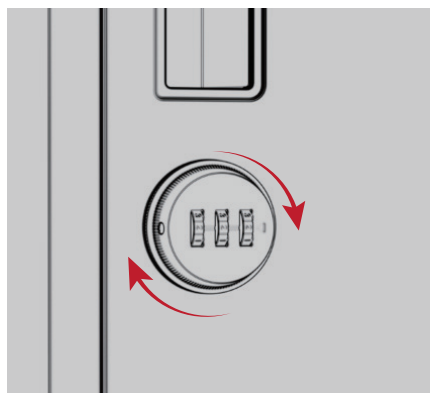
- Factory code: 000 (expires after first change).
- Use this or your reset code.

2. Latch Operation

- Unlock: Turn clockwise.
- Lock: Turn counterclockwise.

3. Secure the Box

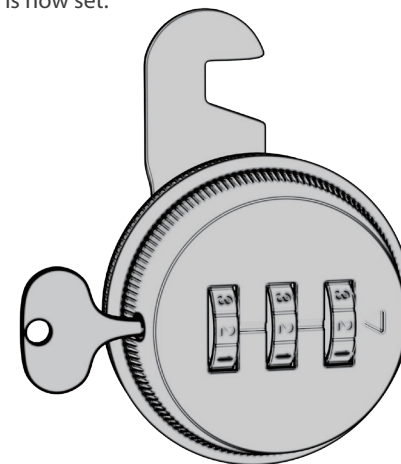
1. Close the door.
 2. Scramble the combination.
- The lock engages, preventing access.



STEP 2

How to Change the Password:

1. Enter your current password or 000 (if not been changed), then turn clockwise to unlock.
2. Insert the pin into the pinhole and press firmly.
3. Set your new password and align with the scale.
4. Release the pin. Your new password is now set.



Important Note: To modify the password later, you must enter the current active code. If forgotten, the password cannot be reset. Always memorize or securely store your new password.

Return Note: Before returning, please reset the combination to the default 000, and return all accessories including the pin, screws, and other included parts.

WARRANTY AND SERVICE

Our commitment to you doesn't end with the purchase. If you encounter any issues or have questions about our products, feel free to contact our dedicated customer service team. We are here to help and will go the extra mile to ensure your satisfaction. Your happiness is our priority, and we'll work tirelessly to resolve any problems you may encounter. Don't hesitate to reach out; we are always ready to assist you.